



LOCATED IN THE HEART OF THE DOWNTOWN DISTRICT

SUMMERHILL HOMESSM



LOCATED WITHIN WALKING DISTANCE OF THE FREMONT BART STATION, LOCALE @ STATE ST. WILL OFFER

1-4 BEDS | 1 - 3.5 BATHS
APPROX. 728 - 2,673 SQ. FT.

A TOTAL OF 157 RESIDENTIAL HOMES
CONSISTING OF

76 ATTACHED ROWHOMES
&

81 CONDOS:

- 14 • 2-STORY PASEO TOWNHOMES
- 25 • 2 & 3 STORY CAPITOL TOWNHOMES
- 42 • 1-STORY FLATS

THE CONDOS' AMENITIES INCLUDE OUTDOOR SPACES WITH BARBECUES, LUSH LANDSCAPING AND SEATING AREAS FOR RESIDENTS TO GATHER, AS WELL AS A FITNESS STUDIO .

LOCALE @ STATE ST. WILL ALSO INCLUDE APPROXIMATELY 21,000 SQUARE FEET OF GROUND-FLOOR, STREET-FRONT RETAIL AND RESTAURANT SPACE DIRECTLY ALONG CAPITOL AVENUE - CREATING A VIBRANT URBAN EXPERIENCE -

LOCALESALES@SHHOMES.COM • 866.936.6108 • 39210 STATE STREET, SUITE 205, FREMONT CA 94538

SummerHill Homes reserves the right to alter plans, specifications, features, prices, and other information described in this brochure without notice or obligation. All renderings are artist's conception. All dimensions and sizes are approximate and may vary. Not to scale. Locations, distances, and layouts are subject to change. Ask the Community Sales Team for details. All information contained in this brochure is qualified in its entirety by the Seller's Information Statement, which is incorporated herein by this reference. BRE# 01301389 3/18



LOCALE

atSTATE STREET

BY SUMMERC HILL HOMES

CAPITOL AVE

RETAIL & CONDOS

RETAIL & CONDOS

PASEO TOWNS
CAPITOL TOWNS
FLATS

BUILDING B

BUILDING A

CONDOS

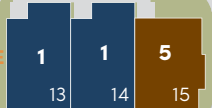
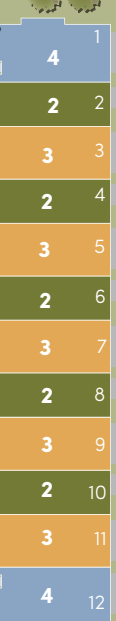
CONDOS

HEARTH COMMON

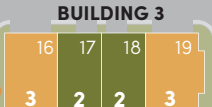
JUBILEE COMMON

BUILDING 2

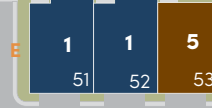
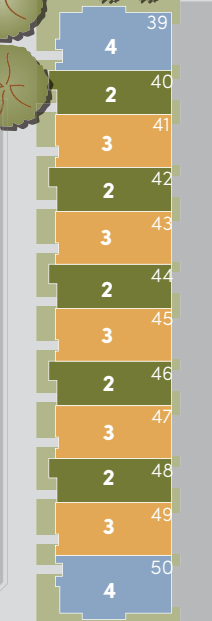
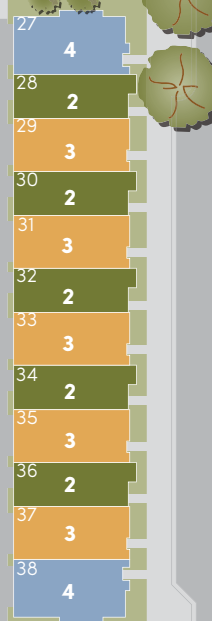
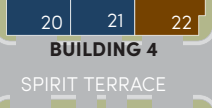
BUILDING 8



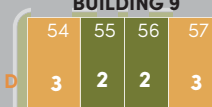
TRIUMPH TERRACE



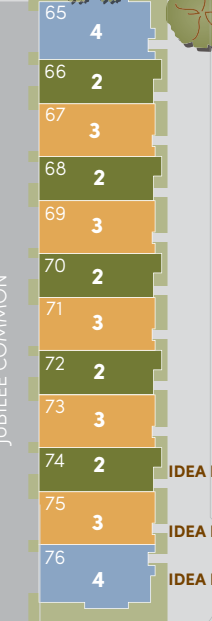
SPIRIT TERRACE



CELEBRATION TERRACE



CARNIVAL TERRACE



IDEA HOME
IDEA HOME
IDEA HOME

MEMORIAL ST

HEARTH COMMON

HEARTH COMMON

DECLARATION ST

JUBILEE COMMON

JUBILEE COMMON

39155 STATE STREET

NATION AVE

ROWHOMES



State Street & Capitol Ave
Fremont CA 94539

SUMMERHILL HOMES™
COMMUNITIES OF DISTINCTION



To Pleasanton

To Palo Alto

Fremont

Sundale

Mission Valley

Mission San Jose

To Mountain View
San Jose and Sunnyvale

To Milpitas
San Jose



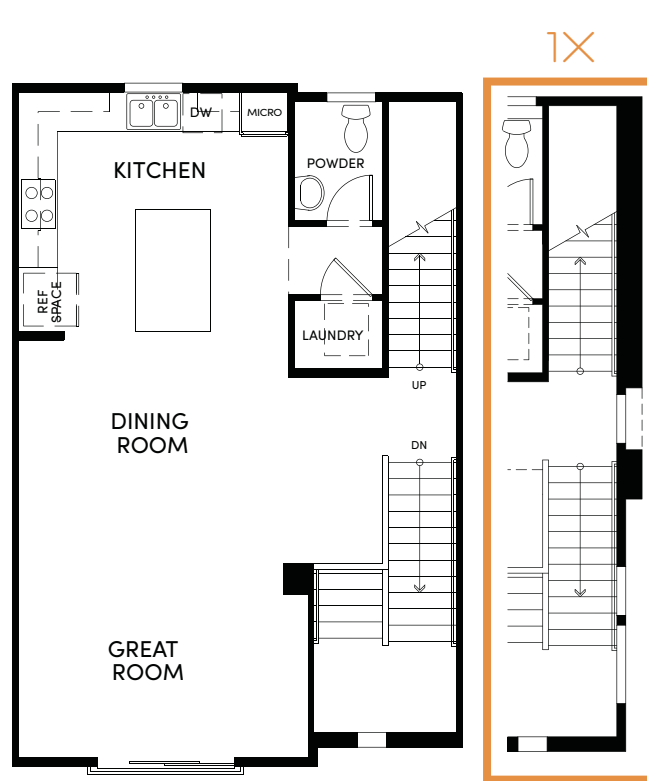
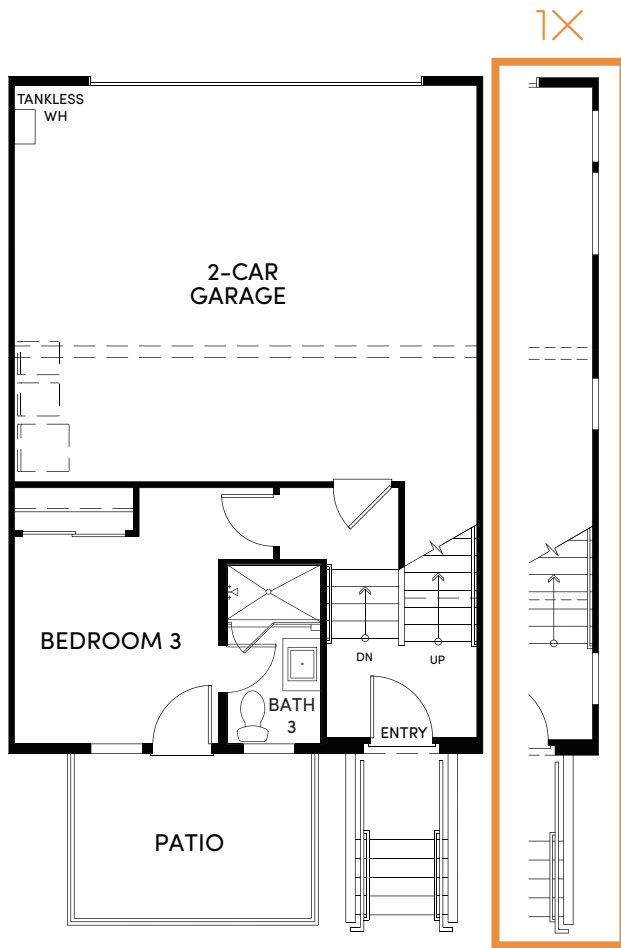
SummerHill Homes reserves the right to alter floor plans, specifications, features, prices, and other information described in this brochure without notice or obligation. All renderings are artist's conception. All room dimensions and home sizes are approximate and may vary depending upon elevation. Window sizes and locations, room sizes, and layouts are subject to change per elevation or floor option. Ask the Community Sales Team for details. All information contained in this brochure is qualified in its entirety by the Seller's Information Statement, which is incorporated herein by this reference. BR#E 01301389 11/17

RESIDENCE 1 & 1X - 3 BEDROOM + 3.5 BATHS • 1,661 APPROX. SQ. FT.

FIRST

SECOND

THIRD



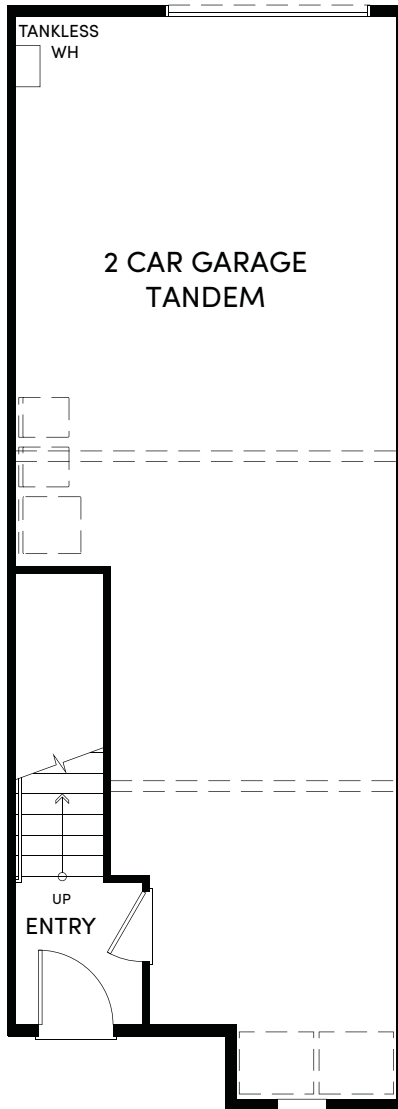
1X: 13,20,51,58

LOCALE

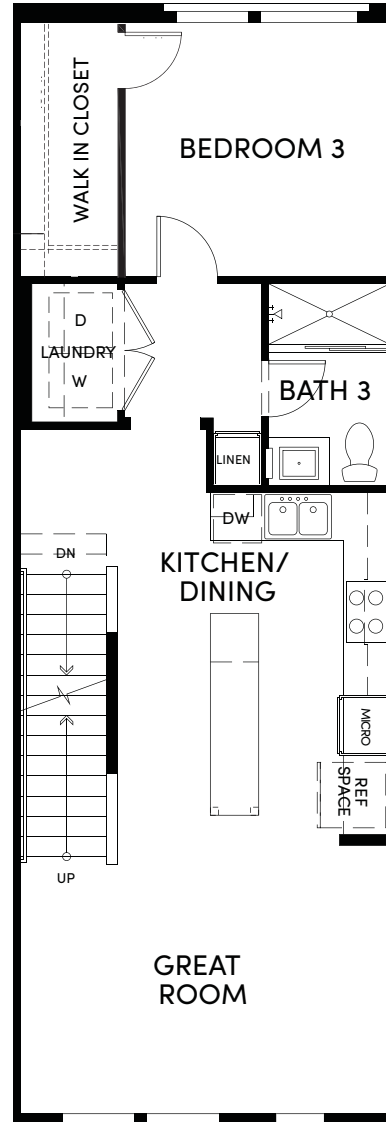
atSTATE STREET

RESIDENCE 2 - 3 BEDROOM + 3 BATHS • 1,411 APPROX. SQ. FT.

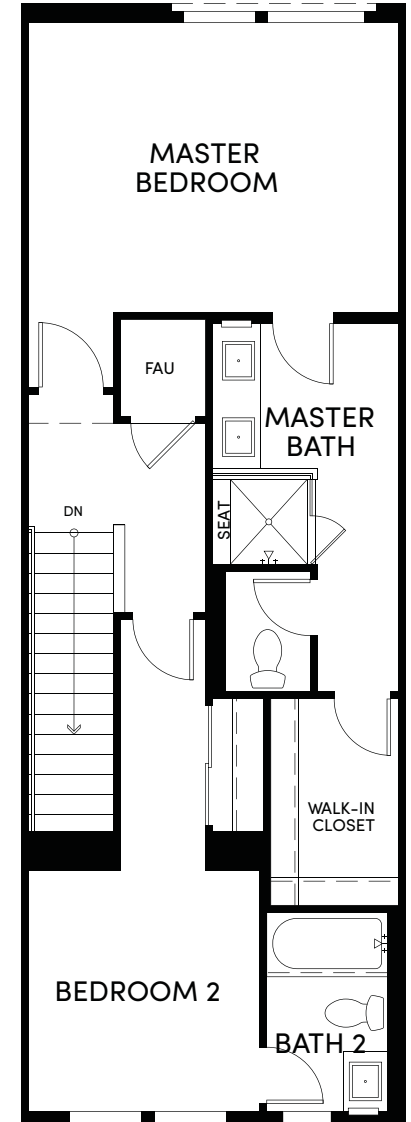
FIRST



SECOND



THIRD



LOCALE

at STATE STREET

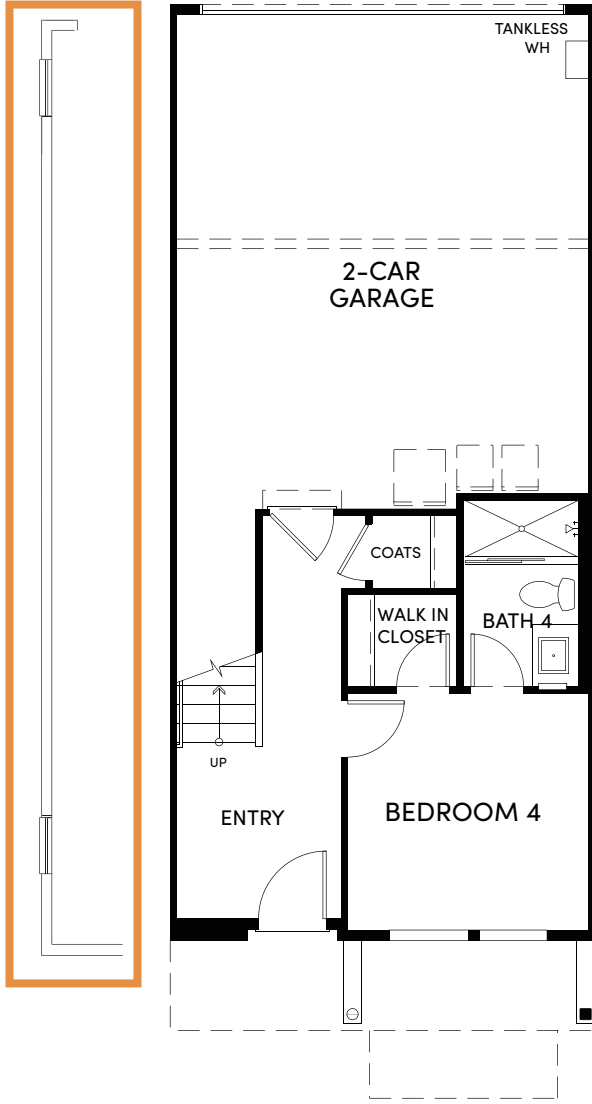
RESIDENCE 3 @ 3X - 4 BEDROOM + 4 BATHS · 1,790-1,801 APPROX. SQ. FT.

FIRST

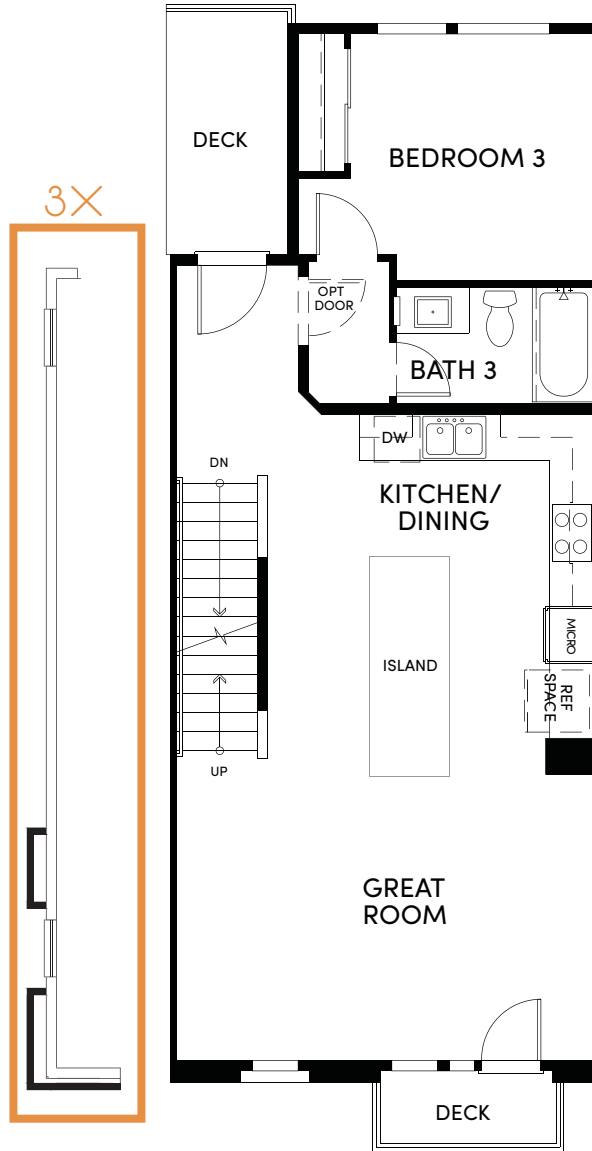
SECOND

THIRD

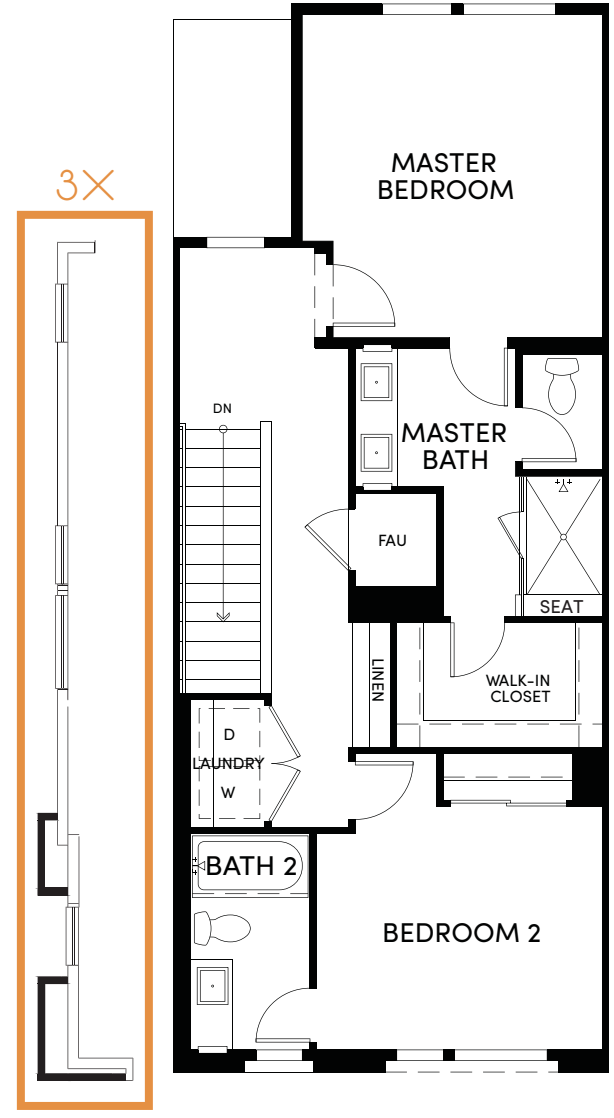
3X



3X

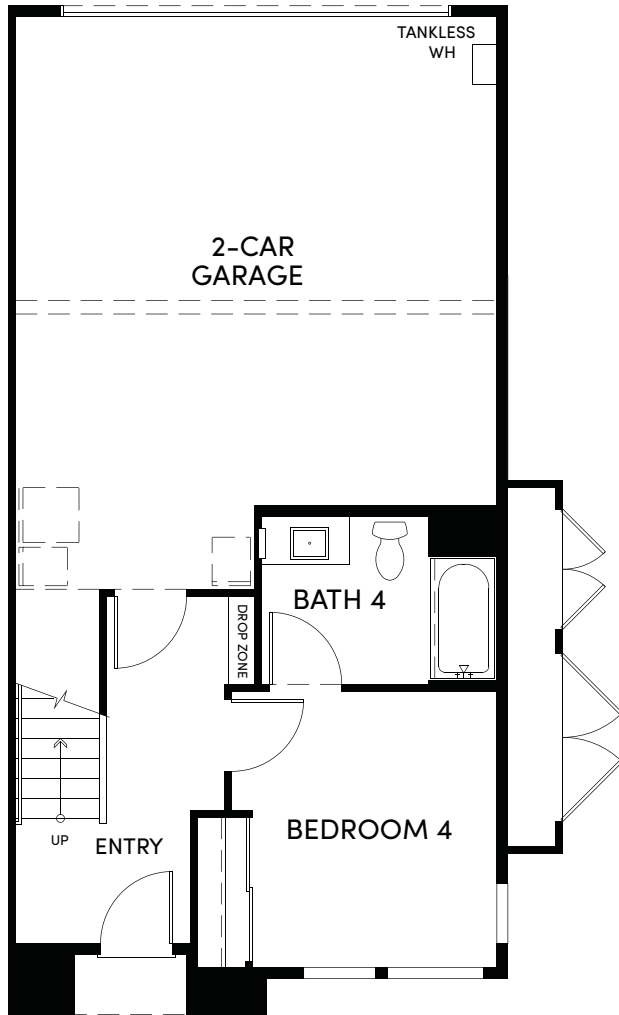


3X

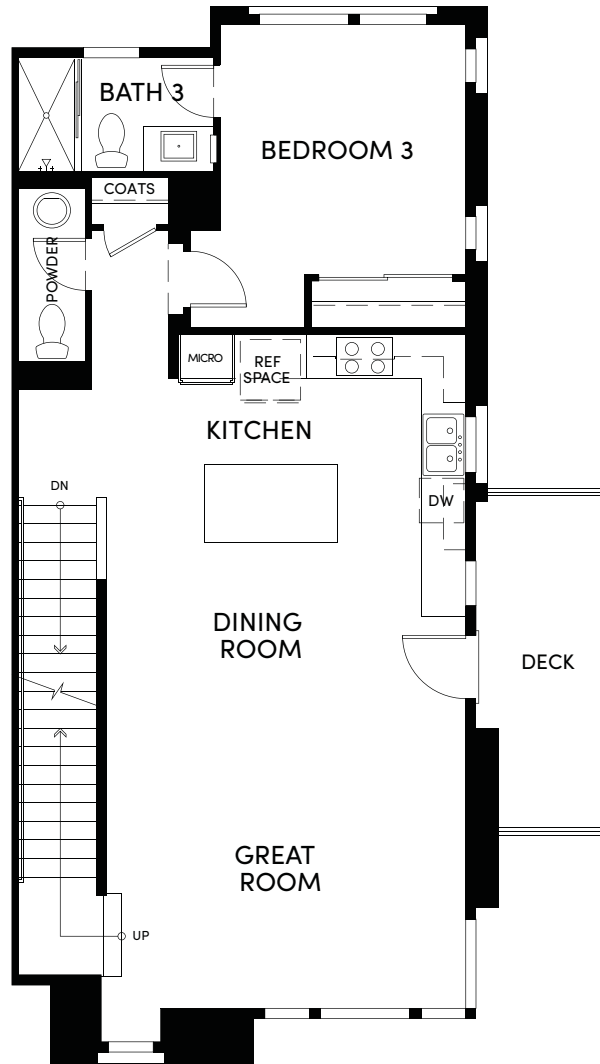


RESIDENCE 4- 4 BEDROOM + 4.5 BATHS • 2,001 APPROX. SQ. FT.

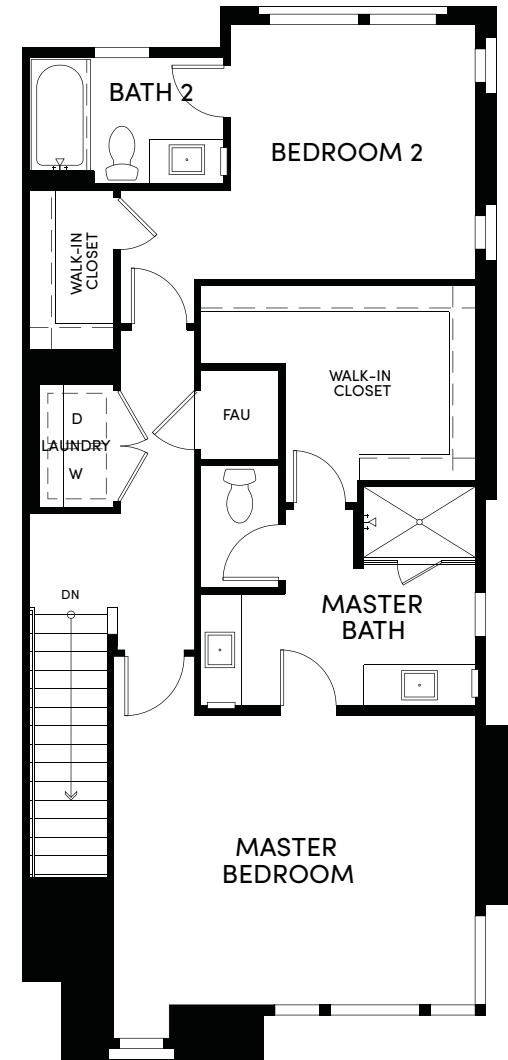
FIRST



SECOND



THIRD

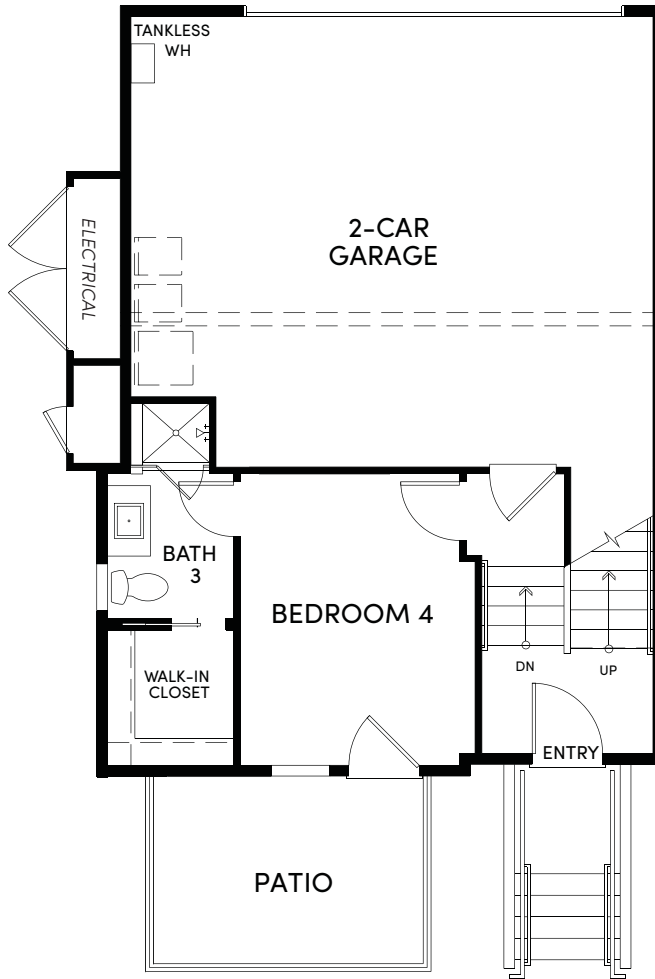


ACCESIBLE UNIT

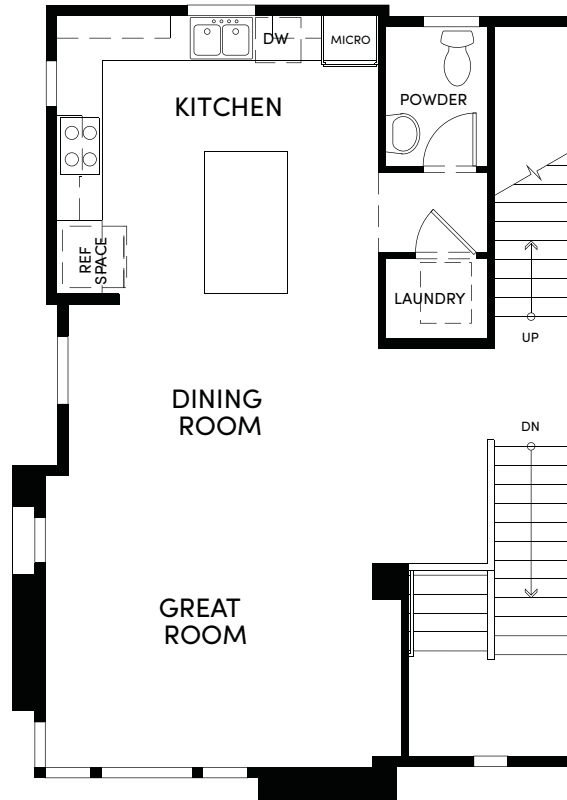


RESIDENCE 5 - 4 BEDROOM + 3.5 BATHS • 1,662 APPROX. SQ. FT.

FIRST



SECOND



THIRD

