



WELCOME TO WAVERLY COVE

20 ATTACHED HOMES

3 BEDROOMS • 3-3.5 BATHROOMS

2,249 TO 2,475 SQ. FT. APPROX.

SIDE BY SIDE 2 CAR GARAGE

ABOUT THE AREA:

Located within the Pilgrim Triton Master Plan, **Waverly Cove** will offer great commute location close to HWY 101, Caltrain and BART, and in close proximity to charming downtown San Mateo. Conveniently located near top employers like VISA, Gilead Sciences, Fisher Investments, Guckenheimer Inc, and Rakuten. And it is only steps away from The Foster City Lagoon and Little Coyote Bike Trail.

ABOUT THE COMMUNITY:

Waverly Cove is an enclave of only 5 buildings with a community park for a tranquil lifestyle.

Homes offer a variety of floor plans including 1, 3, 4 or 5 decks and lagoon views per plan.

ABOUT SCHOOLS:

Audubon Elementary
Bowditch Middle School
San Mateo High School

SUMMERHILL HOMESSM

WWW.SUMMERHILLHOMES.COM

WAVERLYSALES@SHHOMES.COM • 650.335.8106 • 563 PILGRIM DRIVE FOSTER CITY, CA 94404

SummerHill Homes reserves the right to alter plans, specifications, features, prices, and other information described in this brochure without notice or obligation. All renderings are artist's conception. All dimensions and sizes are approximate and may vary. Not to scale. Locations, distances, and layouts are subject to change. Ask the Community Sales Team for details. All information contained in this brochure is qualified in its entirety by the Seller's Information Statement, which is incorporated herein by this reference. BRE# 01301389 1.2020



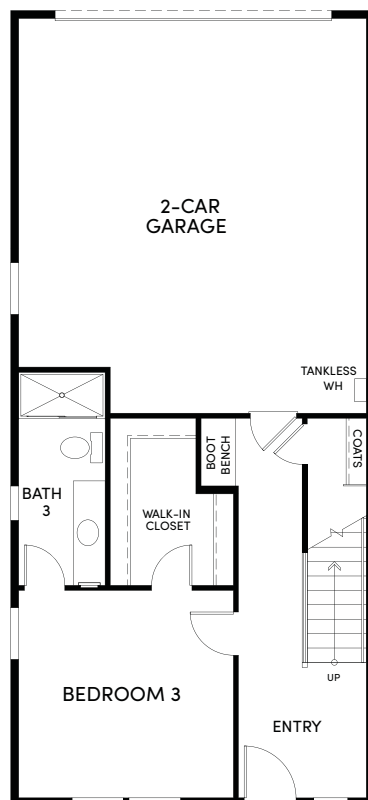


RESIDENCE 1 • GALLERY

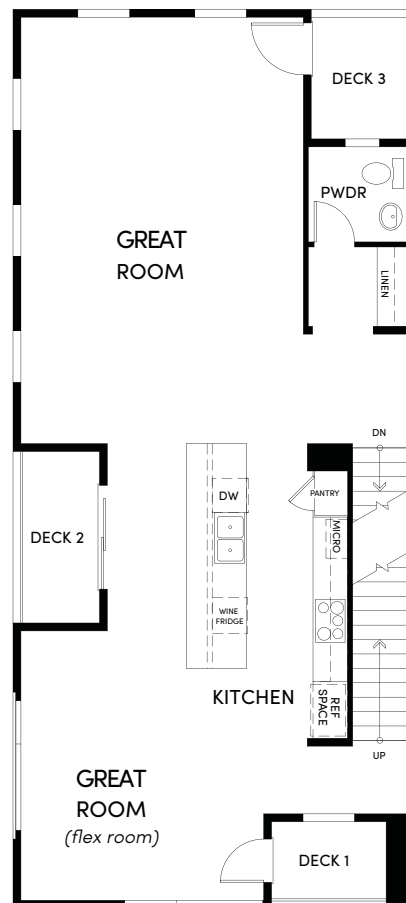


RESIDENCE 1 - 3 BEDROOM + 3.5 BATHS • 2,475 APPROX. SQ. FT.

FIRST



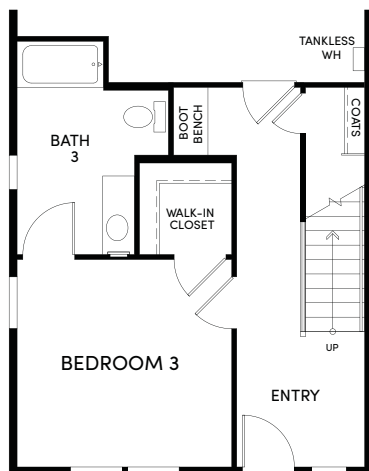
SECOND



THIRD



ADA
BEDROOM 3
AND
BATH 3
Unit 17 Only



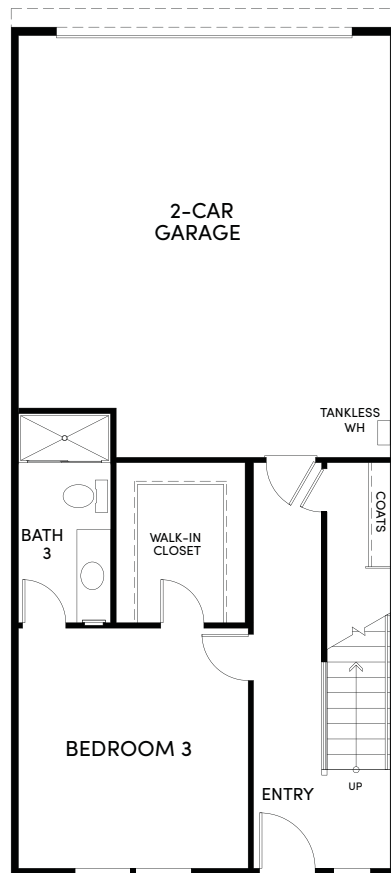
RESIDENCE 2 • GALLERY



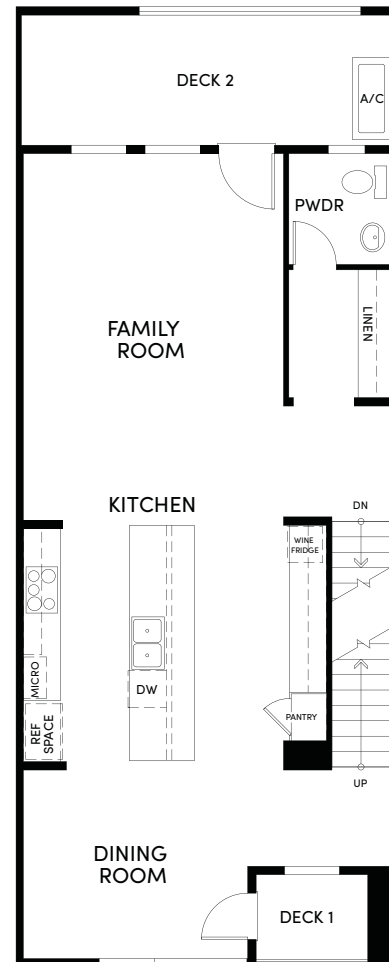
SUMMERHILL HOME/RESERVE/RESERVES THE RIGHT TO ALTER PLANS, SPECIFICATIONS, FEATURES, PRICE, AND OTHER INFORMATION DESCRIBED IN THIS BROCHURE WITHOUT NOTICE OR OBLIGATION. ALL RENDERINGS ARE ARTIST'S CONCEPTION. ALL DIMENSIONS AND SIZES ARE APPROXIMATE AND MAY VARY. LOCATION, DISTANCE, AND LAYOUTS ARE SUBJECT TO CHANGE. ASK THE COMMUNITY SALES TEAM FOR DETAILS. ALL INFORMATION CONTAINED IN THIS BROCHURE IS QUALIFIED IN ITS ENTIRETY BY THE SELLER'S INFORMATION STATEMENT, WHICH IS INCORPORATED HEREIN BY THIS REFERENCE. BRE# 01301389 5/19

RESIDENCE 2A - 3 BEDROOM + 3.5 BATHS • 2,249 APPROX. SQ. FT.

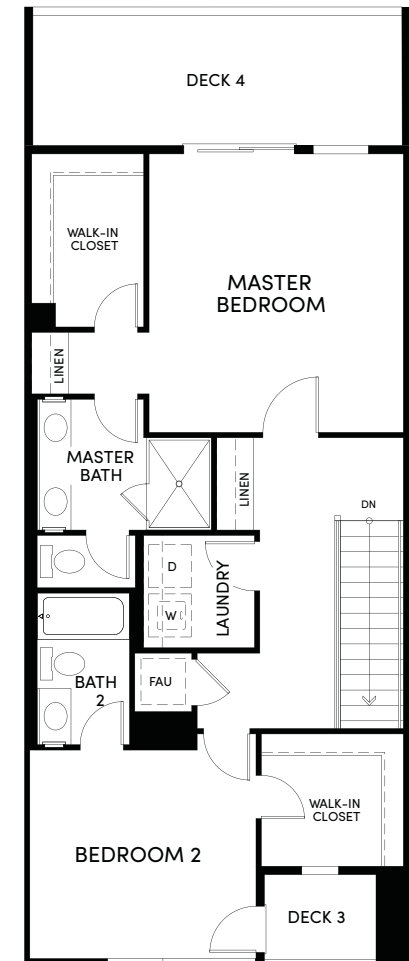
FIRST



SECOND

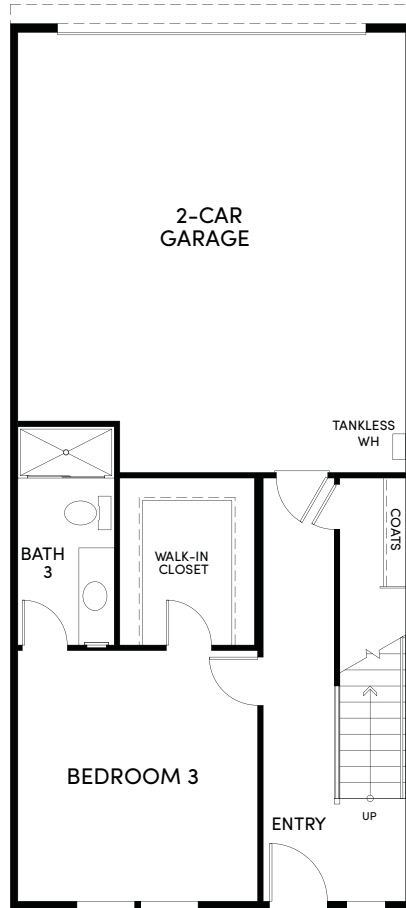


THIRD

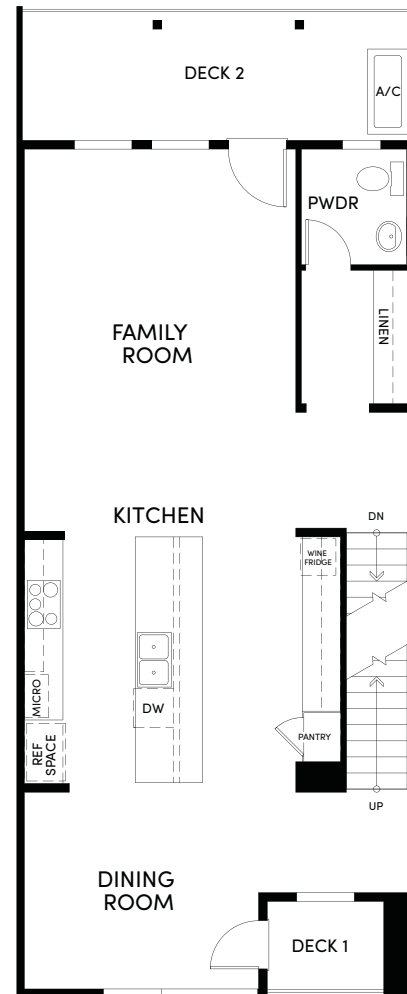


RESIDENCE 2B - 3 BEDROOM + 3.5 BATHS • 2,249 APPROX. SQ. FT.

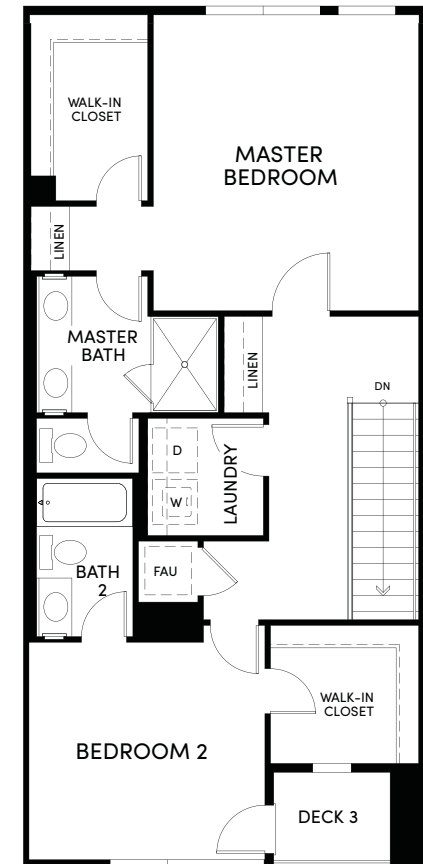
FIRST



SECOND



THIRD

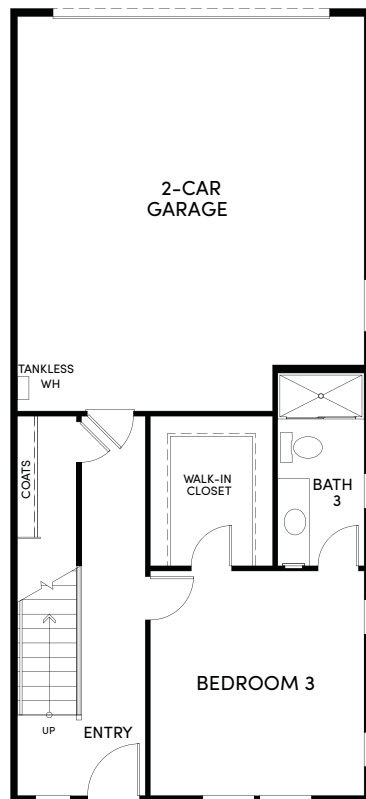


RESIDENCE 3 • GALLERY



RESIDENCE 3 - 3 BEDROOM + 3 BATHS • 2,277 APPROX. SQ. FT.

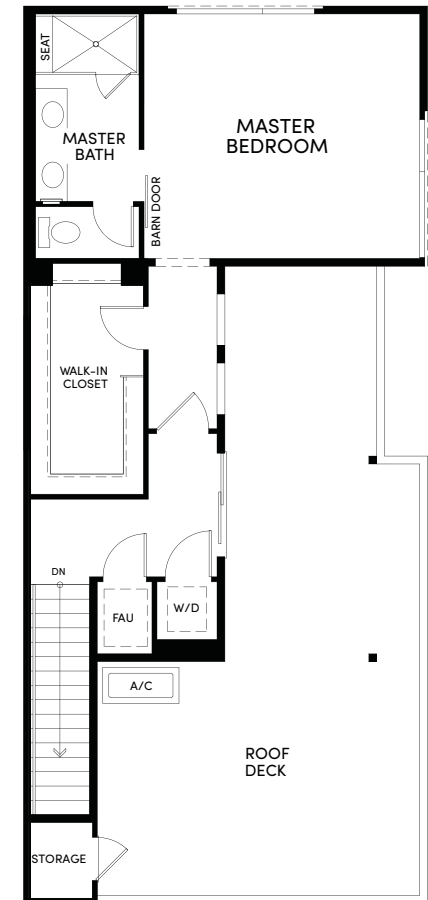
FIRST



SECOND



THIRD



ADA
BEDROOM 3
AND
BATH 3
Unit 1 Only

