

WELCOME TO LAGUNA VISTA

70 ATTACHED HOMES

1-4 BEDROOMS • 1.5-3.5 BATHROOMS

1,436 TO 2,239 SQ. FT. APPROX.

2 CAR GARAGE



HOMES

Offer a variety of floor plans

| | | |
|--------|-------------------------|--------------|
| PLAN 1 | 2 BEDS - 2.5 BATHS | 1,570 SQ.FT. |
| PLAN 2 | 3 BEDS - 2.5 BATHS | 1,866 SQ.FT. |
| PLAN 3 | 4 BEDS - 3.5 BATHS | 2,081 SQ.FT. |
| PLAN 4 | 4 BEDS - 3.5 BATHS | 2,194 SQ.FT. |
| PLAN 5 | 1 BED + DEN - 1.5 BATHS | 1,436 SQ.FT. |
| PLAN 6 | 2 BEDS - 2.5 BATHS | 1,692 SQ.FT. |
| PLAN 7 | 4 BEDS - 3.5 BATHS | 2,239 SQ.FT. |



ABOUT THE AREA:

THE HIDDEN GEM IN THE BAY AREA

Located within the Pilgrim Triton Master Plan, LAGUNA VISTA will offer great commute location close to HWY 101, Caltrain and BART, and in close proximity to charming downtown San Mateo. Conveniently located near top employers like VISA, Gilead Sciences, Fisher Investments, Guckenheimer Inc, and Rakuten. Only steps away from The Foster City Lagoon and Little Coyote Bike Trail.

ABOUT THE COMMUNITY:

LAGUNA VISTA is an enclave of 15 buildings with a community park for a tranquil lifestyle.

SCHOOLS

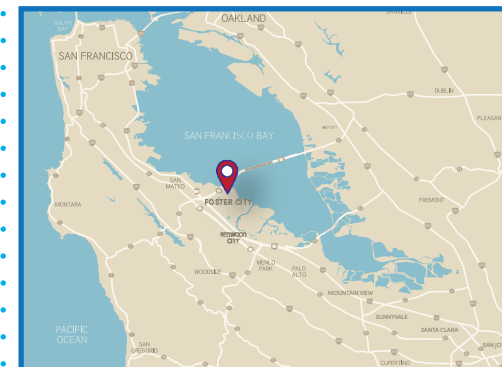
- AUDUBON ELEMENTARY
- BOWDITCH MIDDLE SCHOOL
- SAN MATEO HIGH SCHOOL

AREA

FOSTER CITY THE WATERFRONT SUBURB OF SAN FRANCISCO

- 0.5 MILES TO VISA HEADQUARTERS
- 0.9 MILES TO GUCKENHEIMER INC
- 1.3 MILES TO ILLUMINA
- 1.5 MILES TO GILEAD SCIENCES
- 1.7 MILES TO SONY PLAYSTATION
- 1.7 MILES TO FISHER INVESTMENTS
- 2.8 MILES TO RAKUTEN
- 4.0 MILES TO DOWNTOWN SAN MATEO

CLOSE TO THE ACTION ~ FAR FROM THE CROWDS



LAGUNA

BY SUMMERHILL HOMES *vista*

EXISTING
RESIDENTIAL

LAGOON

WAVERLY COVE
BY SUMMERHILL HOMES

PARK

EAST HILLSDALE BLVD.

RESIDENTIAL

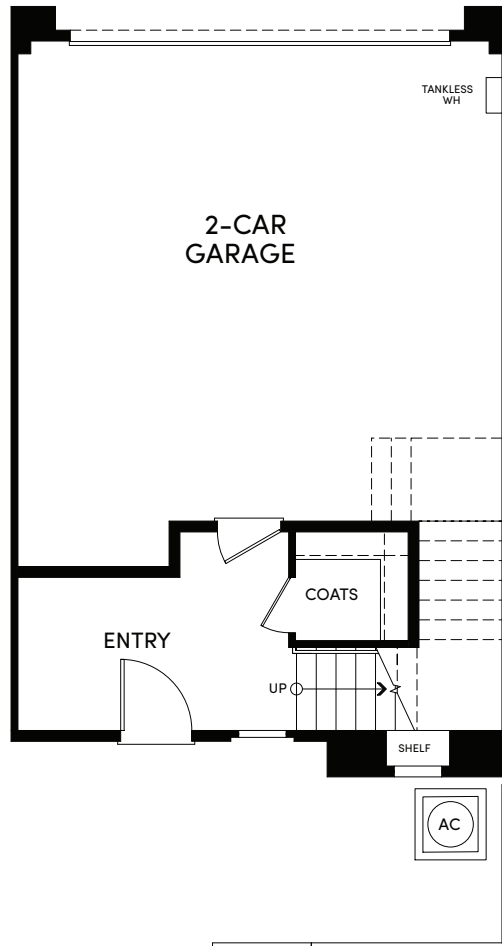
SALES STUDIO

PILGRIM DR

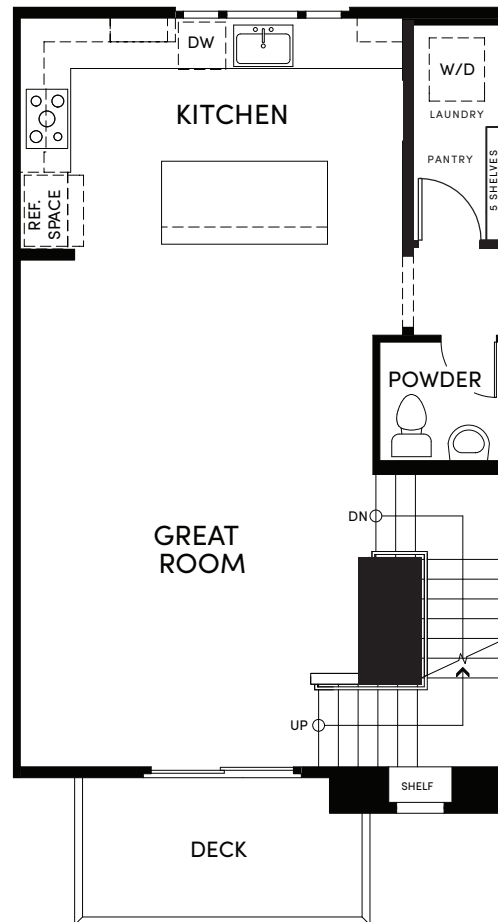


PLAN 1 ~ 2 BEDS • 2.5 BATHS ~ 1,570 SQ. FT.

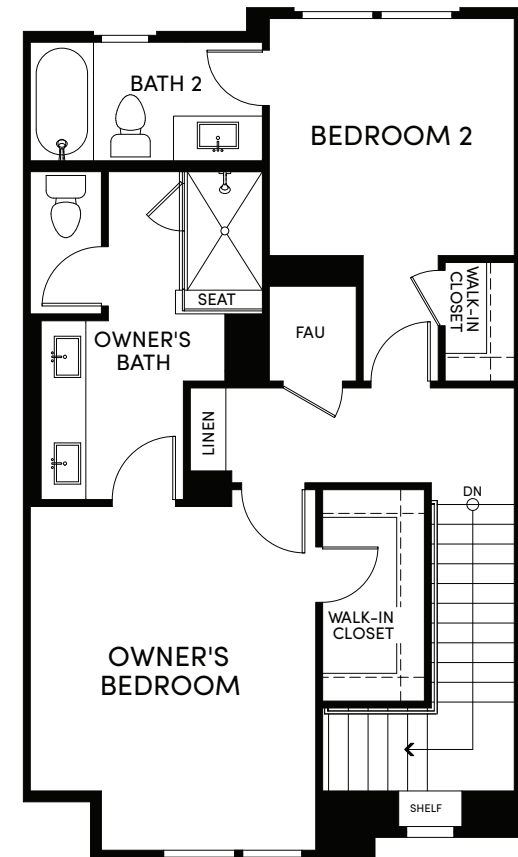
FIRST



SECOND

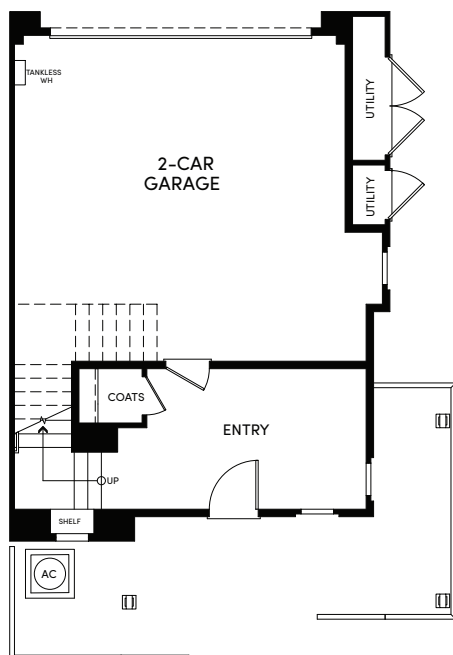


THIRD

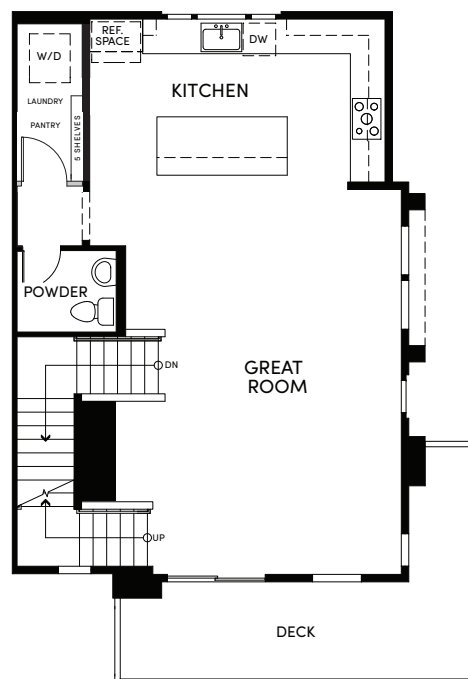


PLAN 2 ~ 3 BEDS • 2.5 BATHS ~ 1,866 SQ. FT.

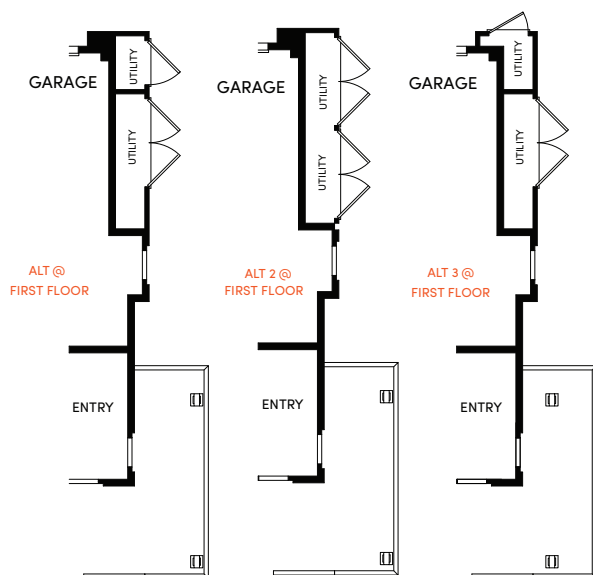
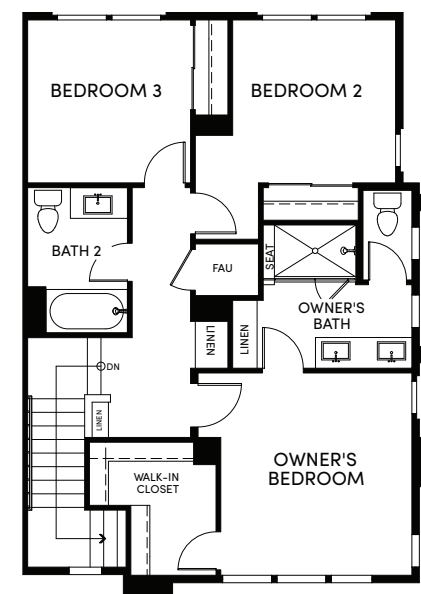
FIRST



SECOND



THIRD



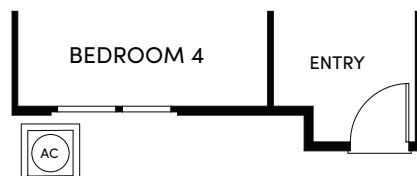
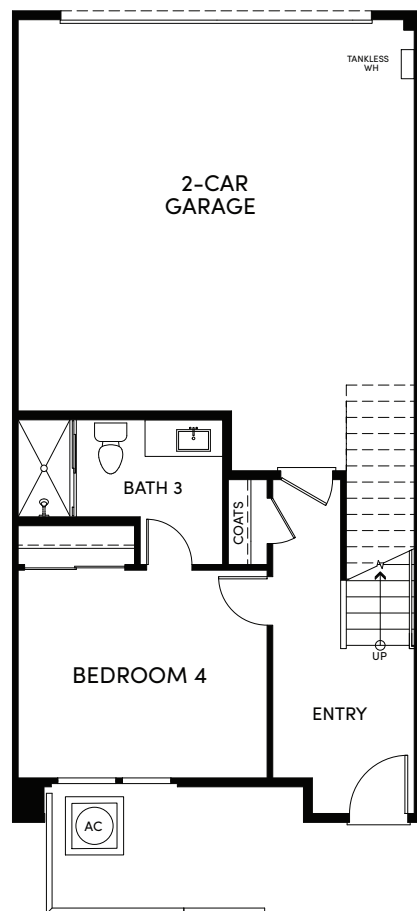
LAGUNA
vista

SUMMERHILL HOMES



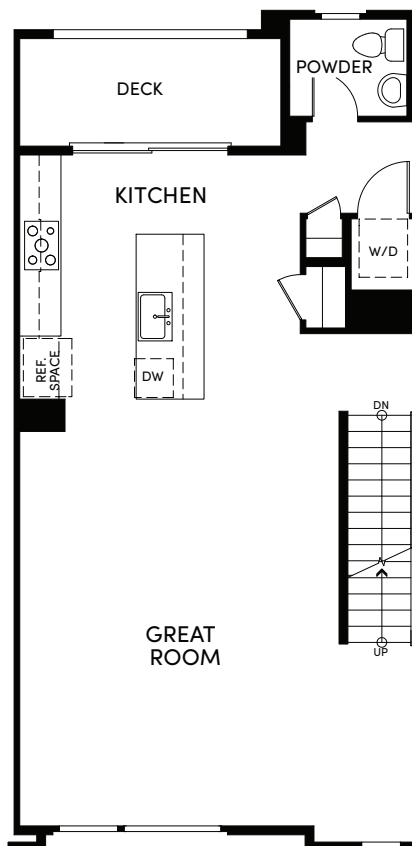
PLAN 3 ~ 4 BEDS • 3.5 BATHS ~ 2,081 SQ. FT.

FIRST



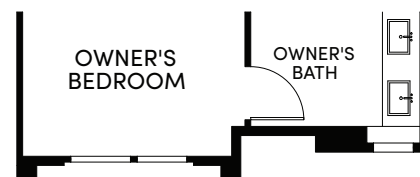
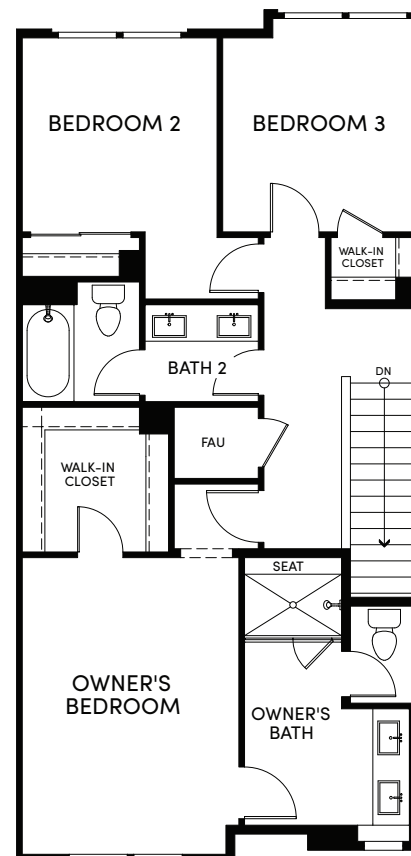
ALT 2 @
FIRST FLOOR

SECOND



ALT 2 @
SECOND FLOOR

THIRD



ALT 2 @
THIRD FLOOR

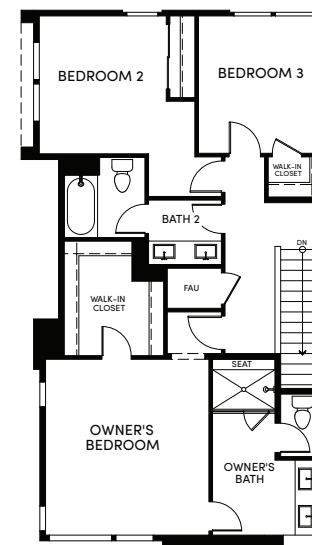
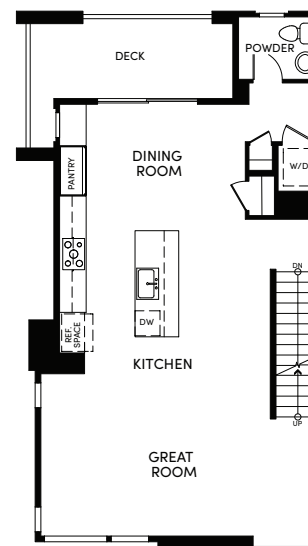
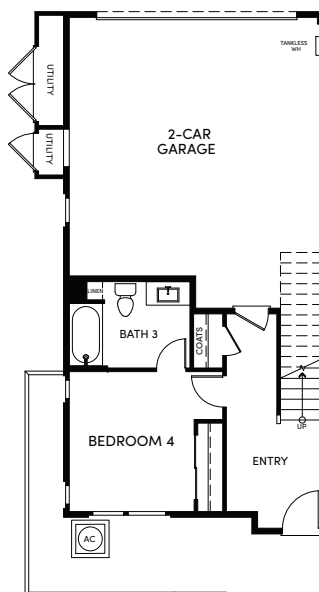
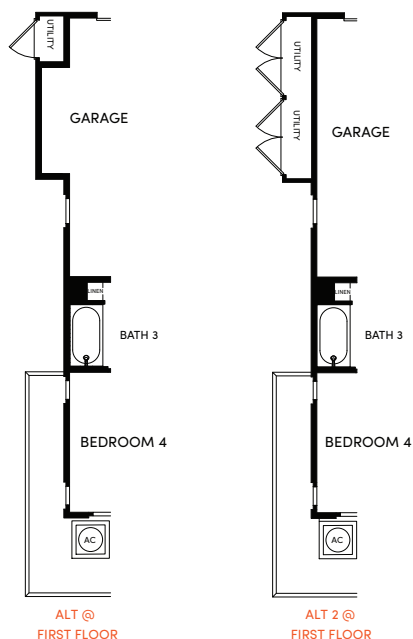
LAGUNA
vista

PLAN 4 ~ 4 BEDS • 3.5 BATHS ~ 2,194 SQ. FT.

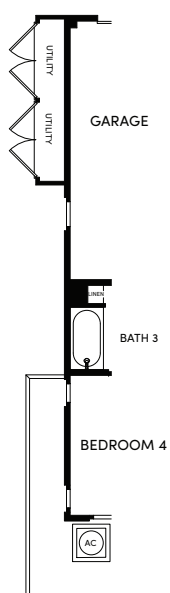
FIRST

SECOND

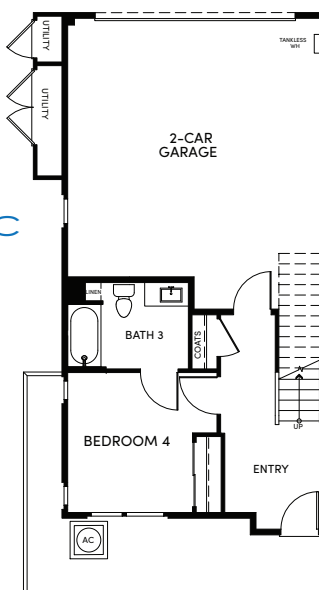
THIRD



4A-ACC
ACCESSIBLE ALT @
FIRST FLOOR



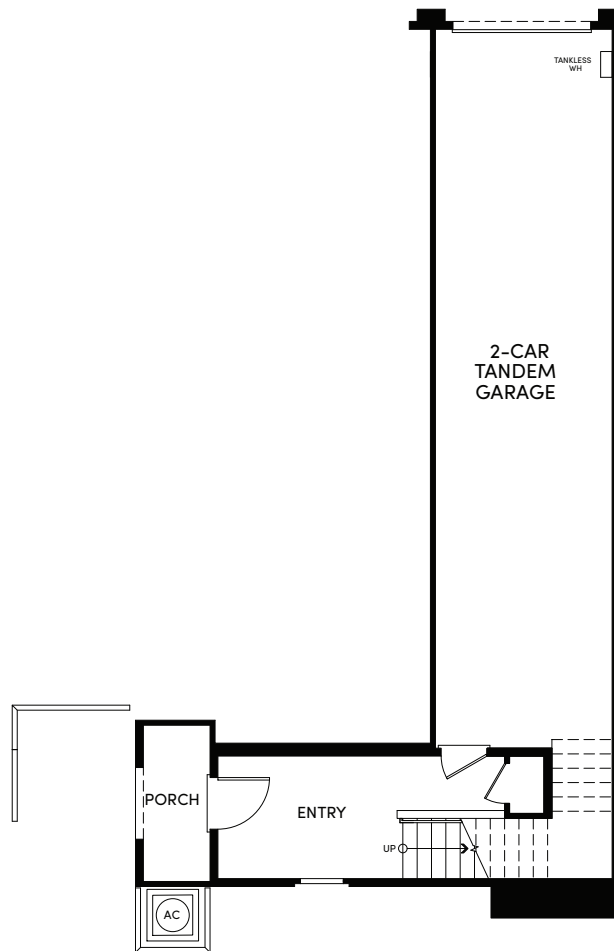
4A-ACC
ACCESSIBLE @
SECOND FLOOR



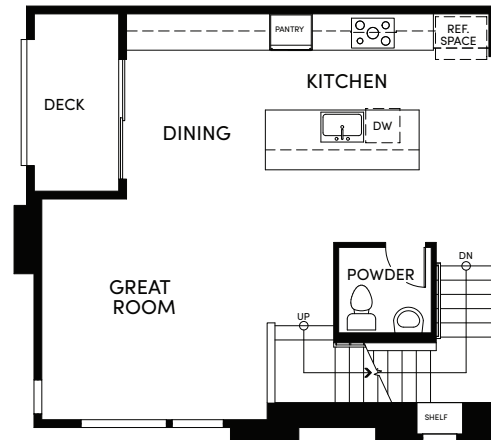
LAGUNA
vista

PLAN 5 ~ 1 BED + DEN • 1.5 BATHS ~ 1,436 SQ. FT.

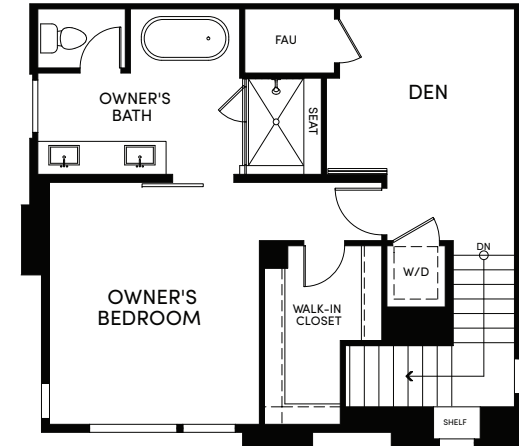
FIRST



SECOND



THIRD

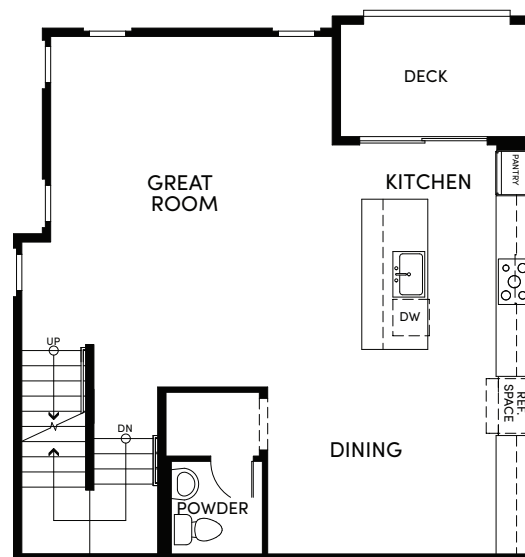
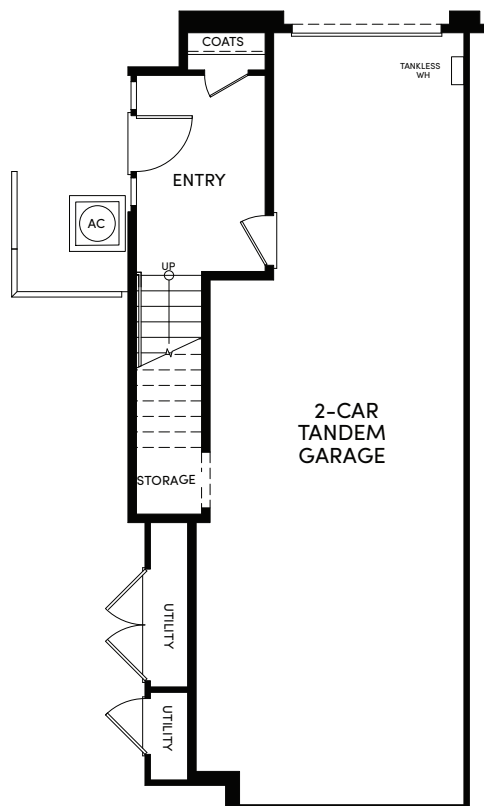


PLAN 6 ~ 2 BEDS • 2.5 BATHS ~ 1,692 SQ. FT.

FIRST

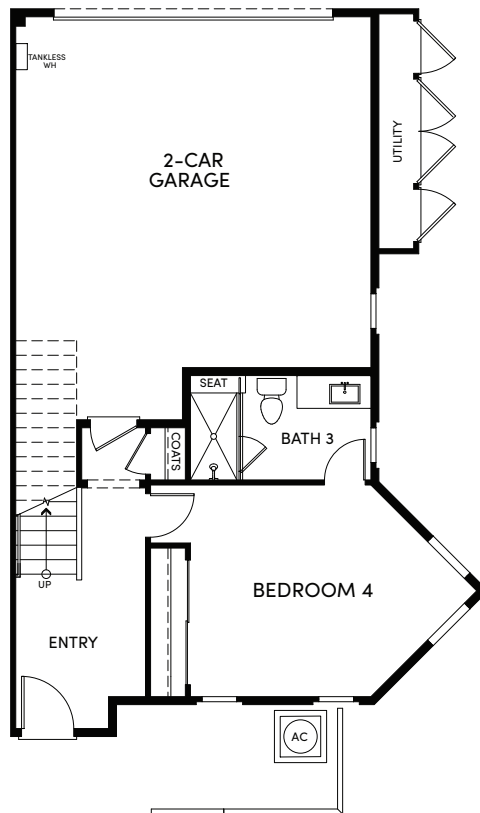
SECOND

THIRD

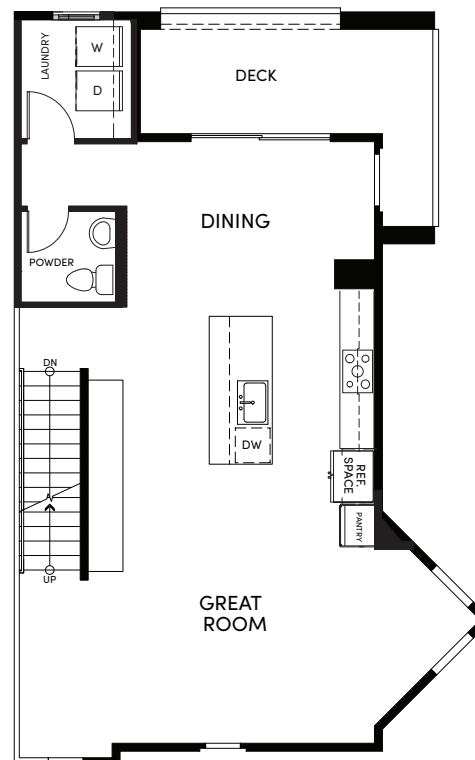


PLAN 7 ~ 4 BEDS • 3.5 BATHS ~ 2,239 SQ. FT.

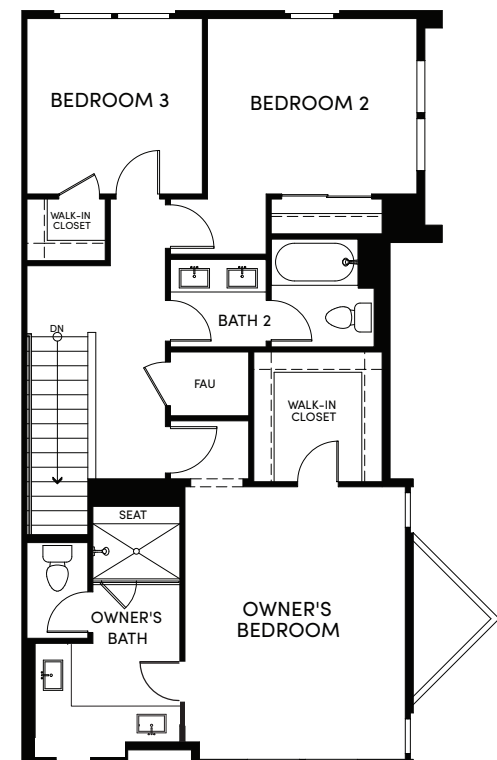
FIRST



SECOND



THIRD



TOP EMPLOYERS

- 1.6 MILES GILEAD
- 1.3 MILES GUCKENHEIMER
- 1.4 MILES VISA HQ
- 1.4 MILES SONY
- 1.5 MILES ILLUMINA
- 1.8 MILES FISHER INVESTMENTS
- 3.3 MILES RAKUTEN
- 12 MILES FACEBOOK HQ
- 14 MILES GENENTECH
- 16 MILES GOOGLE HQ
- 21 MILES AIRBNB HQ
- 21.7 MILES LYFT HQ
- 23 MILES UCSF
- 23 MILES APPLE HQ
- 31 MILES SALESFORCE HQ

Subject to Change



Information shown on this map is compiled from numerous sources and may not be complete or accurate. Distances are estimates and subject to traffic conditions.