

## WELCOME TO LAGUNA VISTA

### 70 ATTACHED HOMES

1-4 BEDROOMS • 1.5-3.5 BATHROOMS

1,436 TO 2,239 SQ. FT. APPROX.

2 CAR GARAGE



### HOMES

Offer a variety of floor plans

PLAN 1	2 BEDS - 2.5 BATHS	1,570 SQ.FT.
PLAN 2	3 BEDS - 2.5 BATHS	1,866 SQ.FT.
PLAN 3	4 BEDS - 3.5 BATHS	2,081 SQ.FT.
PLAN 4	4 BEDS - 3.5 BATHS	2,194 SQ.FT.
PLAN 5	1 BED + DEN - 1.5 BATHS	1,436 SQ.FT.
PLAN 6	2 BEDS - 2.5 BATHS	1,692 SQ.FT.
PLAN 7	4 BEDS - 3.5 BATHS	2,239 SQ.FT.



### ABOUT THE AREA:

#### THE HIDDEN GEM IN THE BAY AREA

Located within the Pilgrim Triton Master Plan, LAGUNA VISTA will offer great commute location close to HWY 101, Caltrain and BART, and in close proximity to charming downtown San Mateo. Conveniently located near top employers like VISA, Gilead Sciences, Fisher Investments, Guckenheimer Inc, and Rakuten. Only steps away from The Foster City Lagoon and Little Coyote Bike Trail.

### ABOUT THE COMMUNITY:

LAGUNA VISTA is an enclave of 15 buildings with a community park for a tranquil lifestyle.

### SCHOOLS

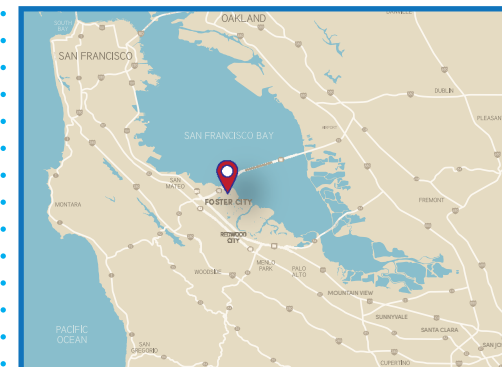
- AUDUBON ELEMENTARY
- BOWDITCH MIDDLE SCHOOL
- SAN MATEO HIGH SCHOOL

### AREA

#### FOSTER CITY THE WATERFRONT SUBURB OF SAN FRANCISCO

- 0.5 MILES TO VISA HEADQUARTERS
- 0.9 MILES TO GUCKENHEIMER INC
- 1.3 MILES TO ILLUMINA
- 1.5 MILES TO GILEAD SCIENCES
- 1.7 MILES TO SONY PLAYSTATION
- 1.7 MILES TO FISHER INVESTMENTS
- 2.8 MILES TO RAKUTEN
- 4.0 MILES TO DOWNTOWN SAN MATEO

#### CLOSE TO THE ACTION ~ FAR FROM THE CROWDS



# LAGUNA

BY SUMMERHILL HOMES *vista*

EXISTING  
RESIDENTIAL

LAGOON

WAVERLY COVE  
BY SUMMERHILL HOMES

PARK

EAST HILLSDALE BLVD.

RESIDENTIAL

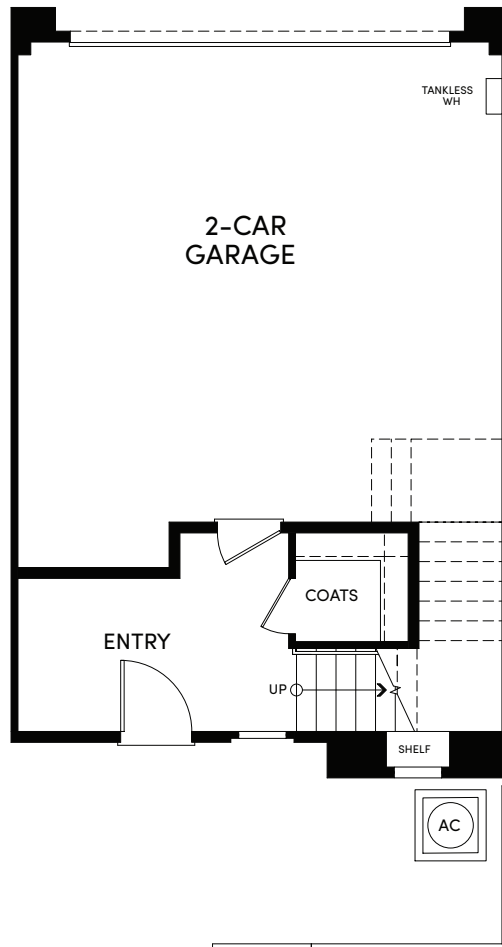
SALES STUDIO

PILGRIM DR

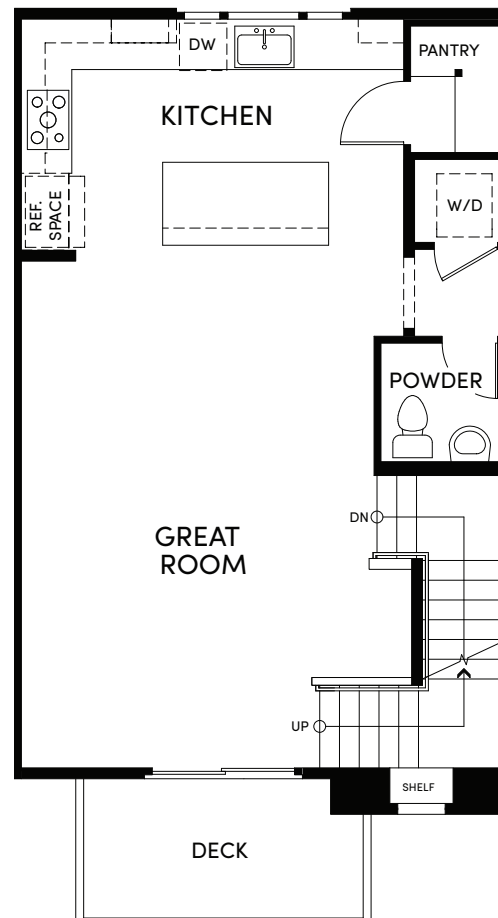


# PLAN 1 ~ 2 BEDS • 2.5 BATHS ~ 1,570 SQ. FT.

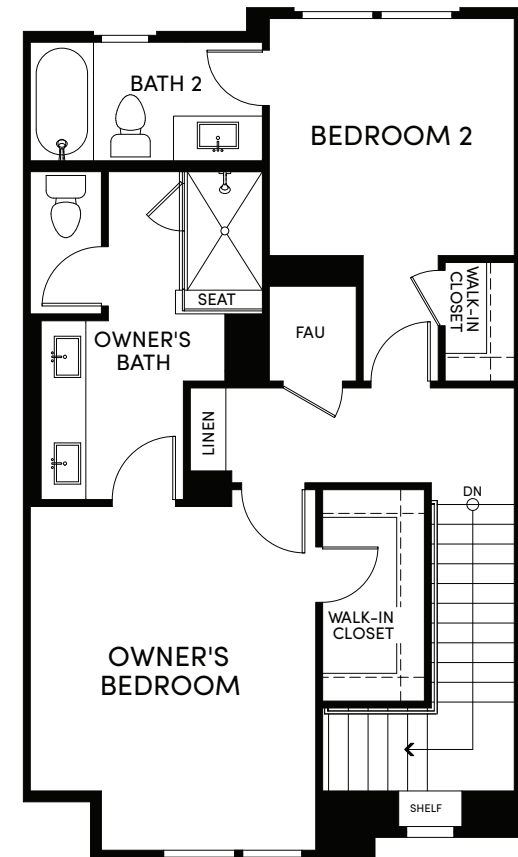
FIRST



SECOND

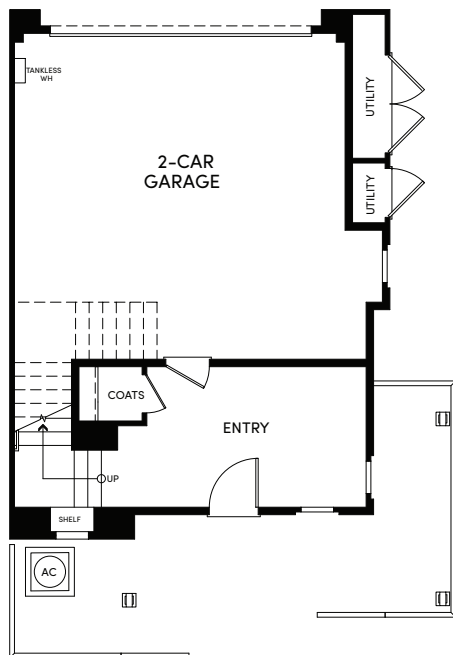


THIRD

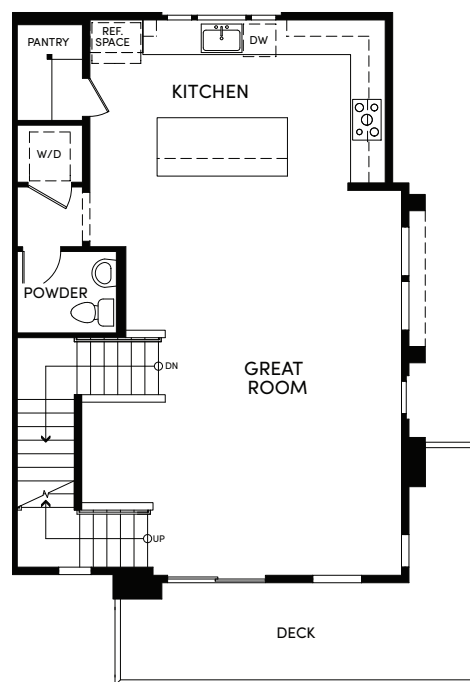


# PLAN 2 ~ 3 BEDS • 2.5 BATHS ~ 1,866 SQ. FT.

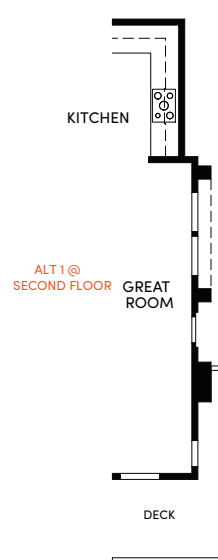
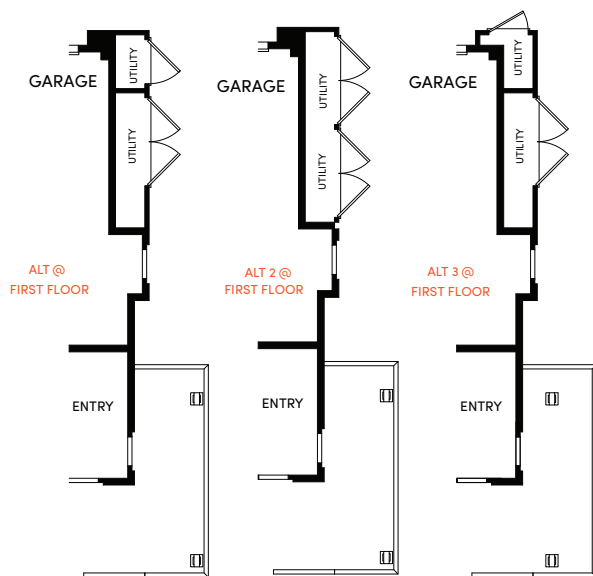
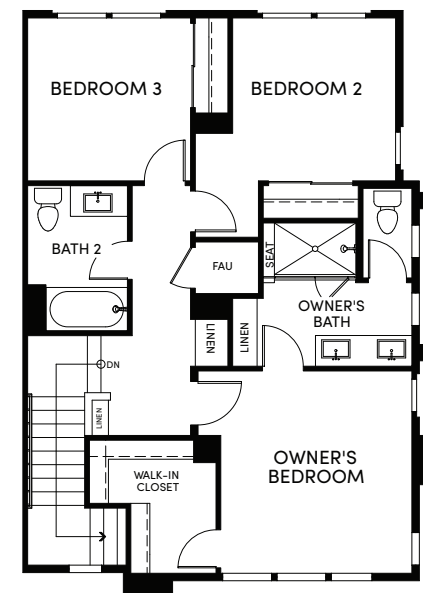
FIRST



SECOND



THIRD



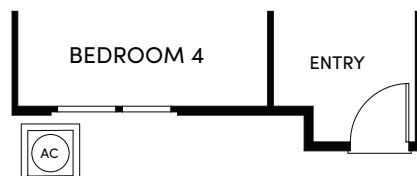
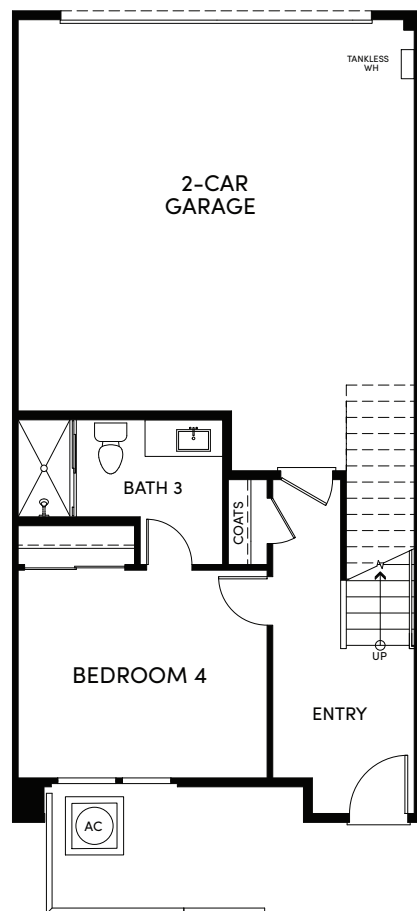
LAGUNA  
vista

SUMMERHILL HOMES



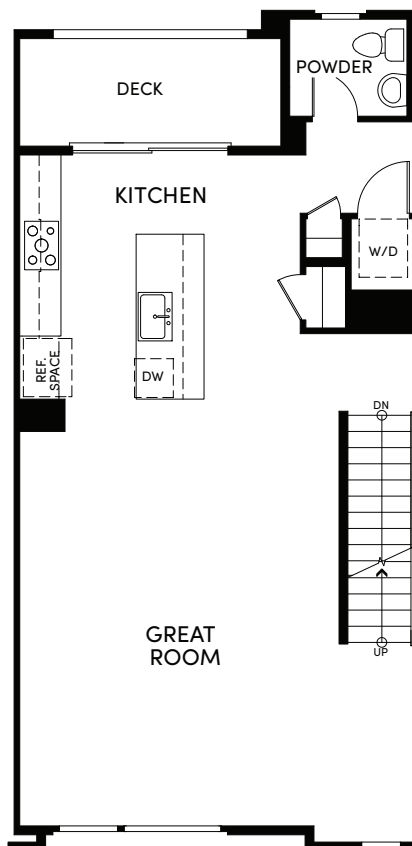
# PLAN 3 ~ 4 BEDS • 3.5 BATHS ~ 2,081 SQ. FT.

FIRST



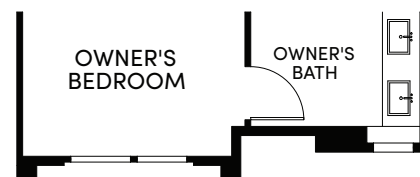
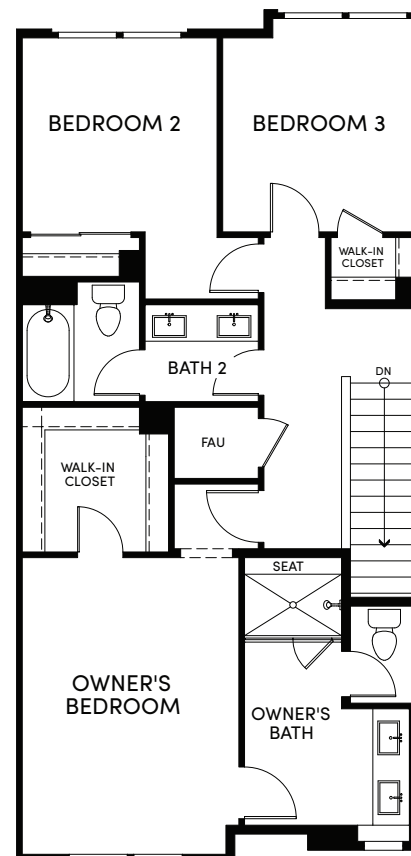
ALT 2 @  
FIRST FLOOR

SECOND



ALT 2 @  
SECOND FLOOR

THIRD



ALT 2 @  
THIRD FLOOR

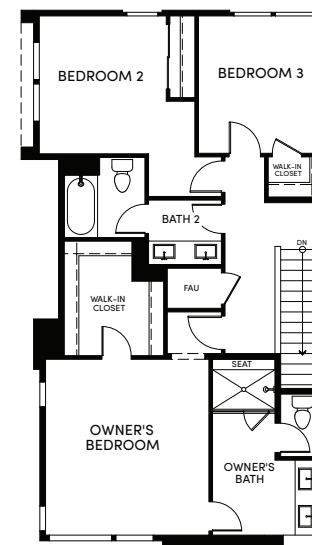
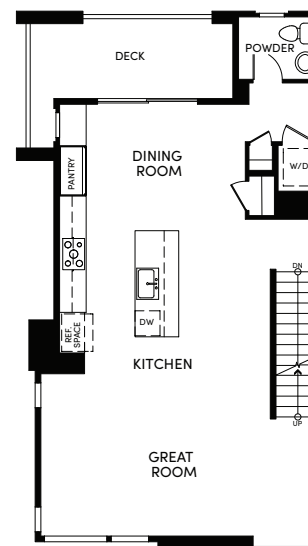
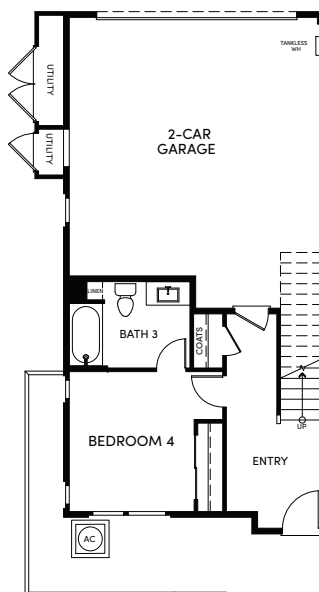
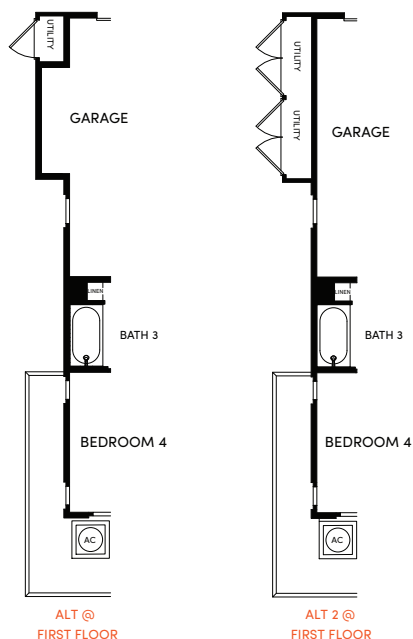
LAGUNA  
vista

# PLAN 4 ~ 4 BEDS • 3.5 BATHS ~ 2,194 SQ. FT.

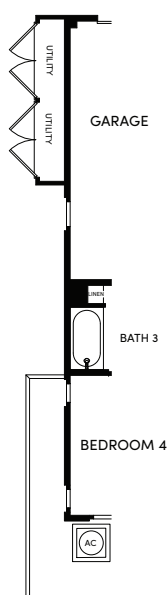
FIRST

SECOND

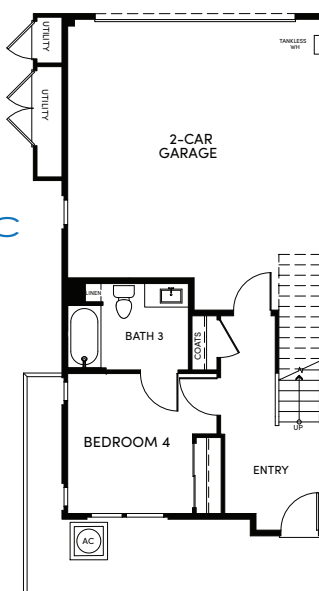
THIRD



4A-ACC  
ACCESSIBLE ALT @  
FIRST FLOOR



4A-ACC  
ACCESSIBLE @  
SECOND FLOOR



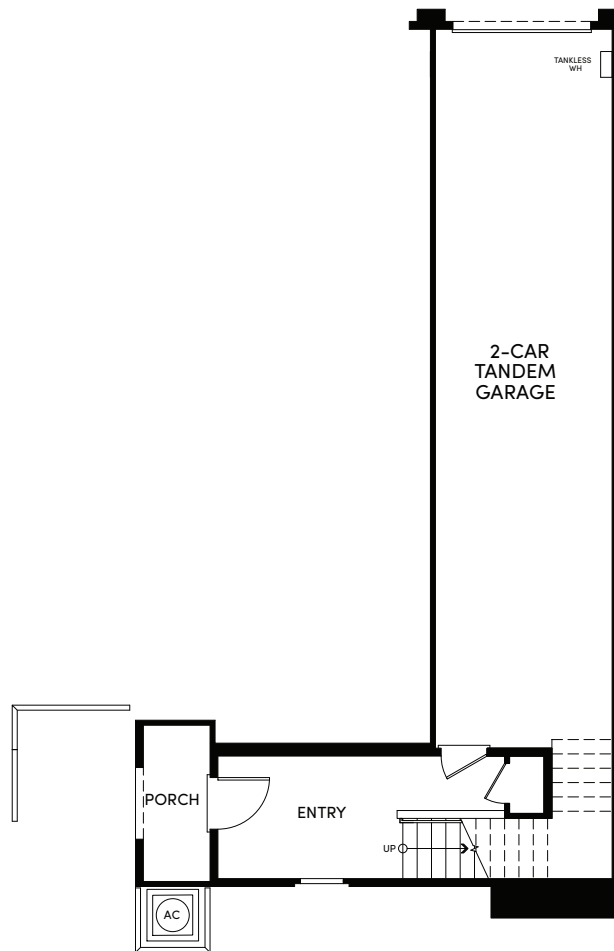
LAGUNA  
vista

SUMMERHILL HOMES

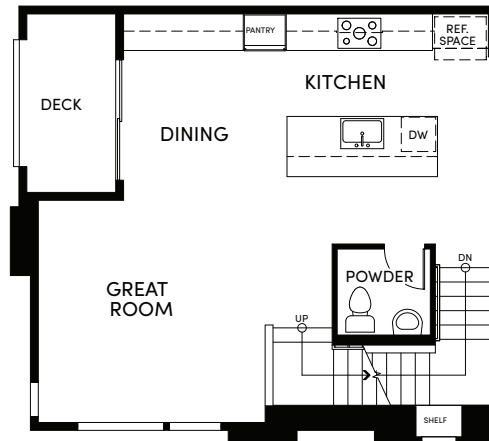


# PLAN 5 ~ 1 BED + DEN • 1.5 BATHS ~ 1,436 SQ. FT.

FIRST



SECOND



THIRD

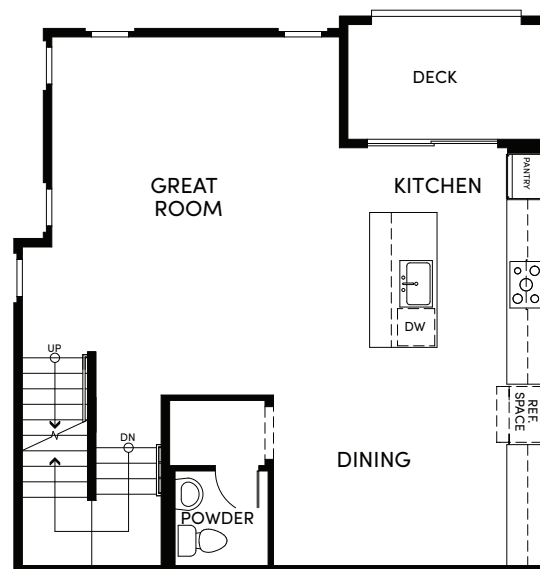
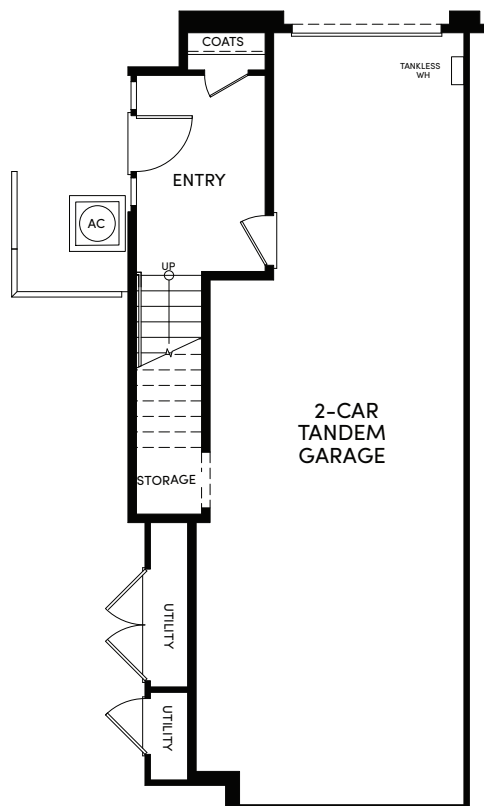


# PLAN 6 ~ 2 BEDS • 2.5 BATHS ~ 1,692 SQ. FT.

FIRST

SECOND

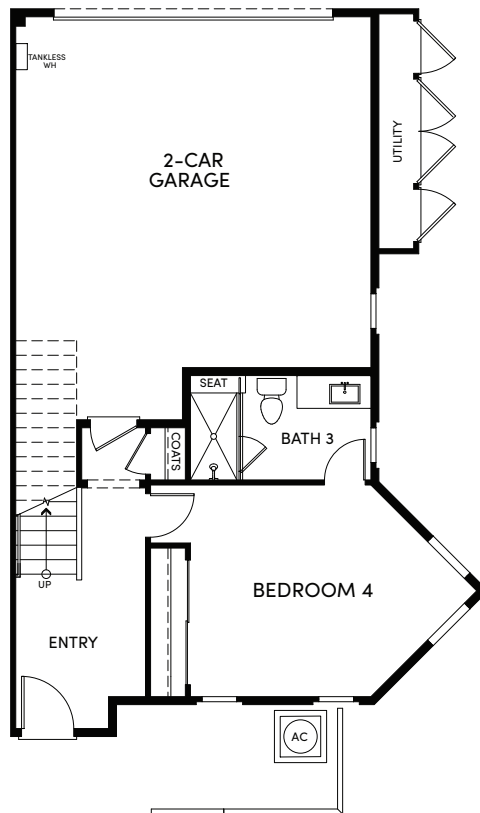
THIRD



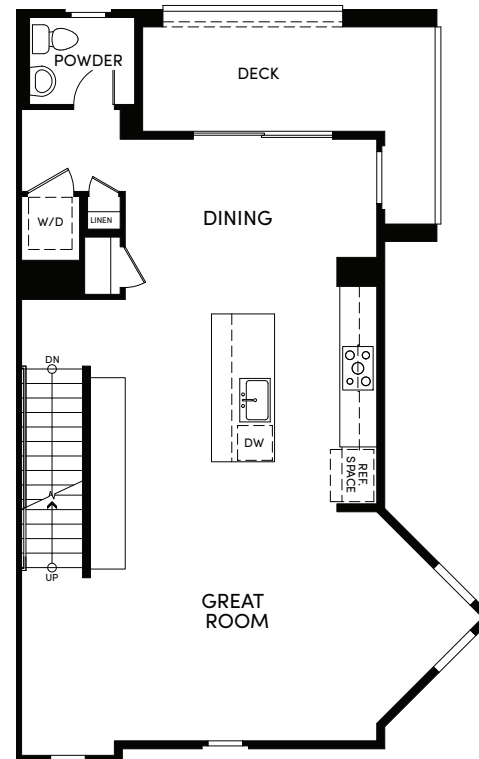


# PLAN 7 ~ 4 BEDS • 3.5 BATHS ~ 2,239 SQ. FT.

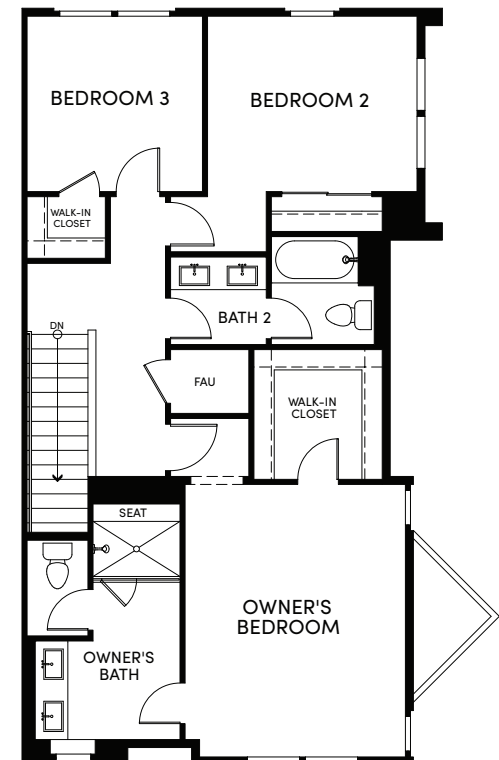
FIRST



SECOND



THIRD



## TOP EMPLOYERS

- 1.6 MILES GILEAD
- 1.3 MILES GUCKENHEIMER
- 1.4 MILES VISA HQ
- 1.4 MILES SONY
- 1.5 MILES ILLUMINA
- 1.8 MILES FISHER INVESTMENTS
- 3.3 MILES RAKUTEN
- 12 MILES FACEBOOK HQ
- 14 MILES GENENTECH
- 16 MILES GOOGLE HQ
- 21 MILES AIRBNB HQ
- 21.7 MILES LYFT HQ
- 23 MILES UCSF
- 23 MILES APPLE HQ
- 31 MILES SALESFORCE HQ

Subject to Change



Information shown on this map is compiled from numerous sources and may not be complete or accurate. Distances are estimates and subject to traffic conditions.